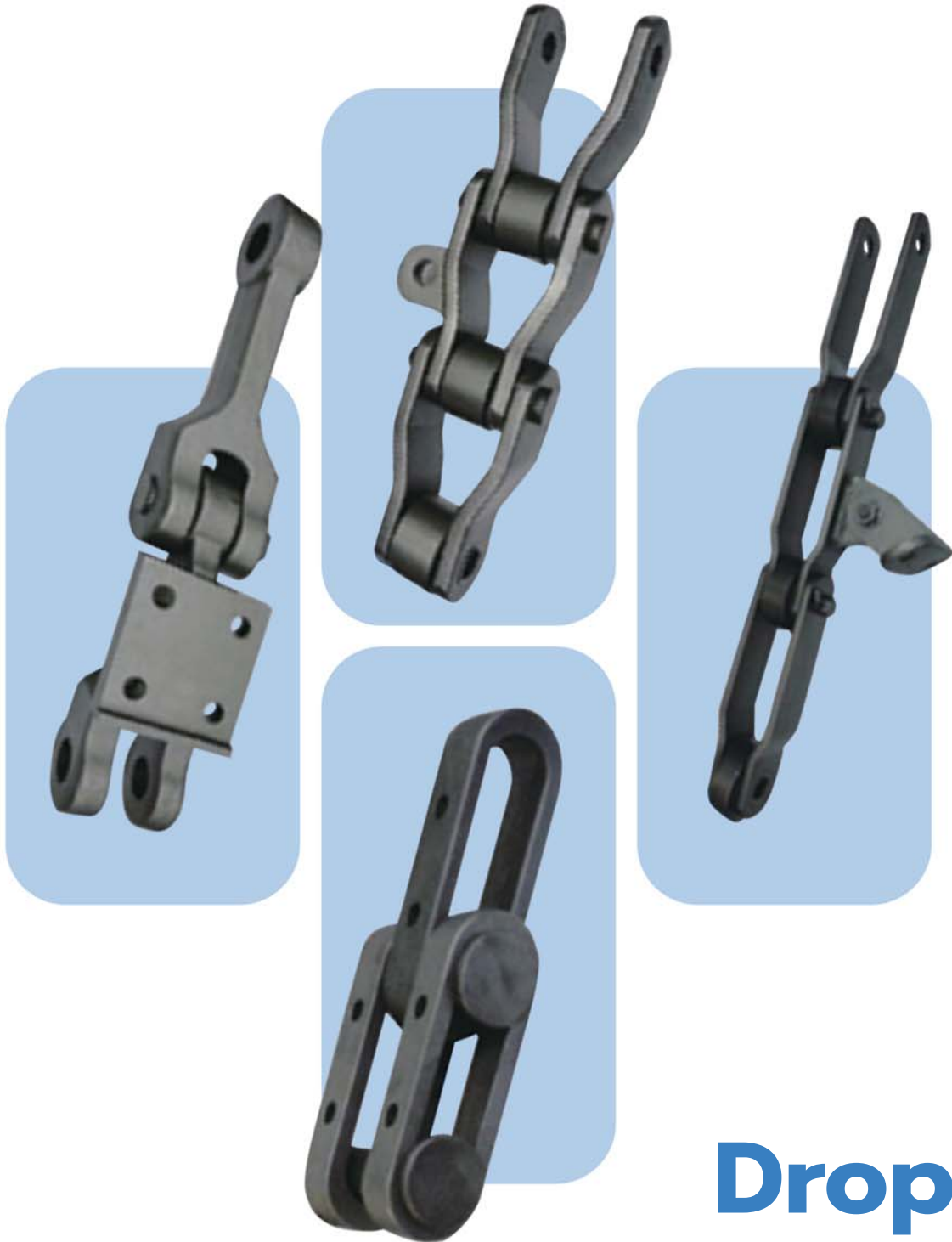




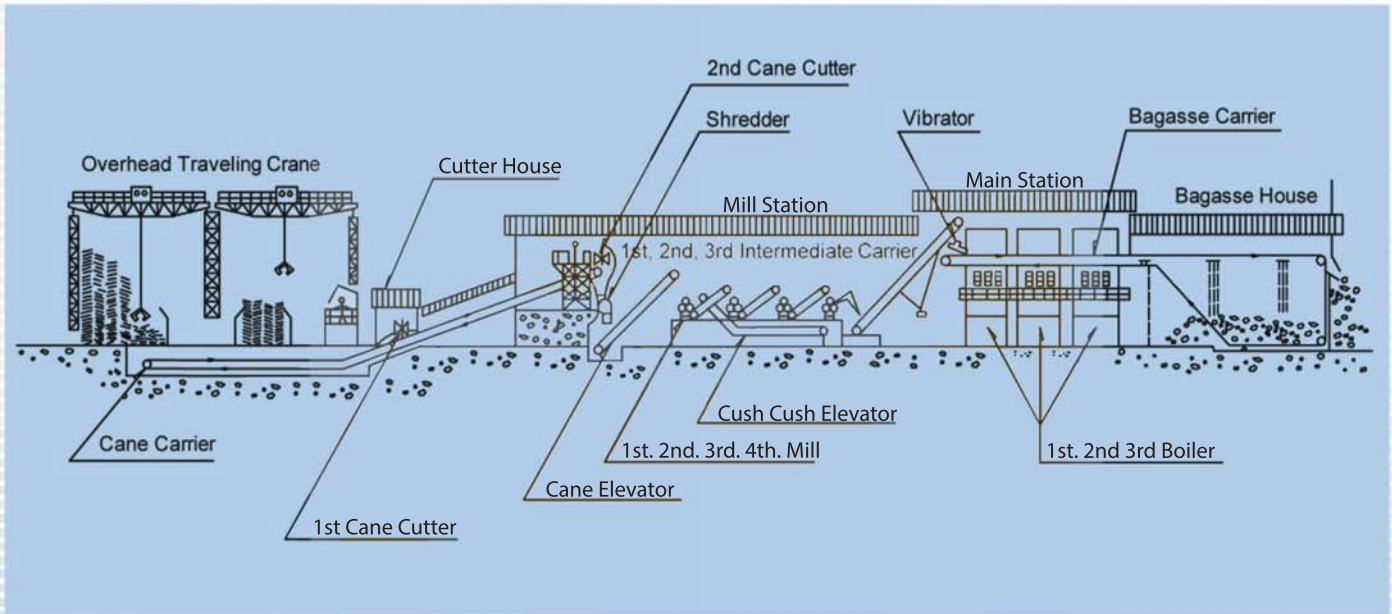
RPM

Power Transmission
Company Limited

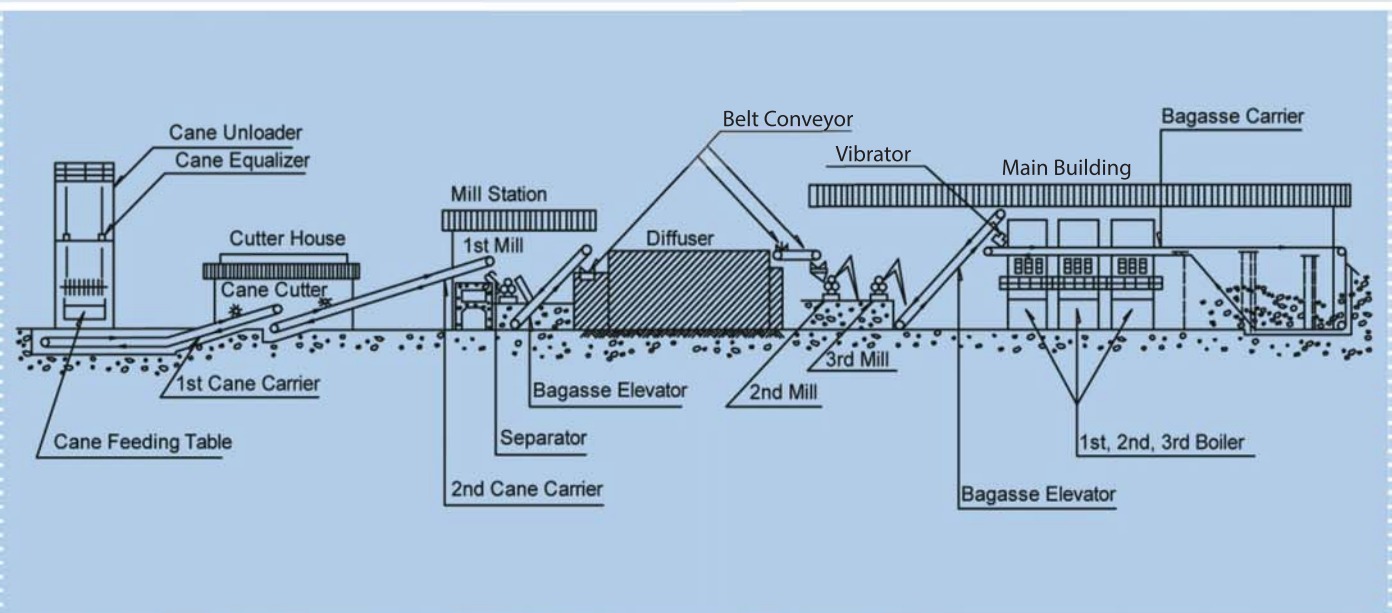


Chain for Sugar Industry

● Mill System



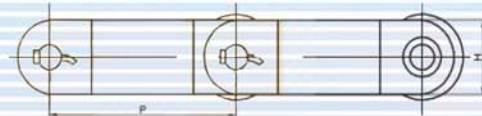
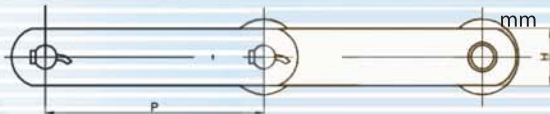
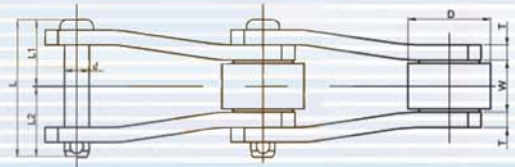
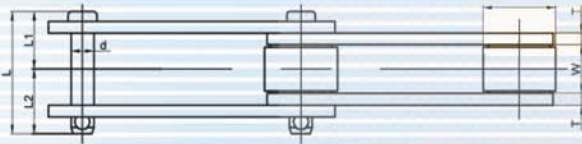
● Diffuser System





Chain for Sugar Industry

● Roller Carrier Chain



Straight Linkplate(A)

Offset Linkplate(B)

RPM Chain No.	Type	Pitch	Roller diameter	Width between inner plates	Pin diameter	Pin length			Link Plate		Average Ultimate Strength	Mass/m
		P	D	d	L	L	L1	L2	Hieght H	Thickness T		
		mm	mm	mm	mm	mm	mm	mm	mm	mm		
SS1113	B	102.60	50.80	37.50	17.50	83.00	38.00	45.00	38.10	6.30	9500	13.20
SS1124	B	101.60	50.80	32.00	12.80	80.60	37.80	42.80	38.10	7.90	8500	17.50
SS1125	B	101.60	50.80	32.60	17.40	83.00	38.00	45.00	44.50	7.90	15500	14.30
SS1114	A	152.40	50.80	32.50	15.88	81.70	38.50	43.20	38.10	7.90	12700	11.80
SS1130	B	152.40	63.50	37.60	18.90	82.00	38.50	43.50	50.80	6.30	15400	13.70
SS1796 Hyper	AB	152.40	76.20	38.20	22.25	101.00	45.00	56.00	57.20	9.50	48000	25.70
SS2184 Hyper	B	152.40	76.20	34.90	22.20	97.00	44.00	53.00	50.80	9.50	37000	20.00
SS960	A	152.40	70.00	38.10	22.22	118.30	54.80	63.50	57.20	14.00	43000	26.00
SS996	A	152.40	69.90	38.10	18.90	97.10	44.80	52.30	50.80	9.50	32000	17.90
SS800	AB	203.20	89.00	46.10	25.40	125.00	60.00	65.00	76.20	12.70	76000	29.00
SS22840	B	228.60	90.00	37.10	25.40	101.50	46.50	88.00	63.50	9.50	40000	22.20
0904	A	101.60	50.80	29.40	17.44	79.00	36.20	42.80	44.50	7.90	18150	12.50
09060	AB	152.40	69.90	38.20	18.90	98.00	45.00	53.00	50.80	9.50	31000	17.50
09061	AB	152.40	69.90	37.10	18.94	97.10	44.40	52.70	57.20	9.50	38600	20.00
09063	A	152.40	76.20	38.20	23.80	103.00	46.50	56.50	63.50	10.30	63500	24.30

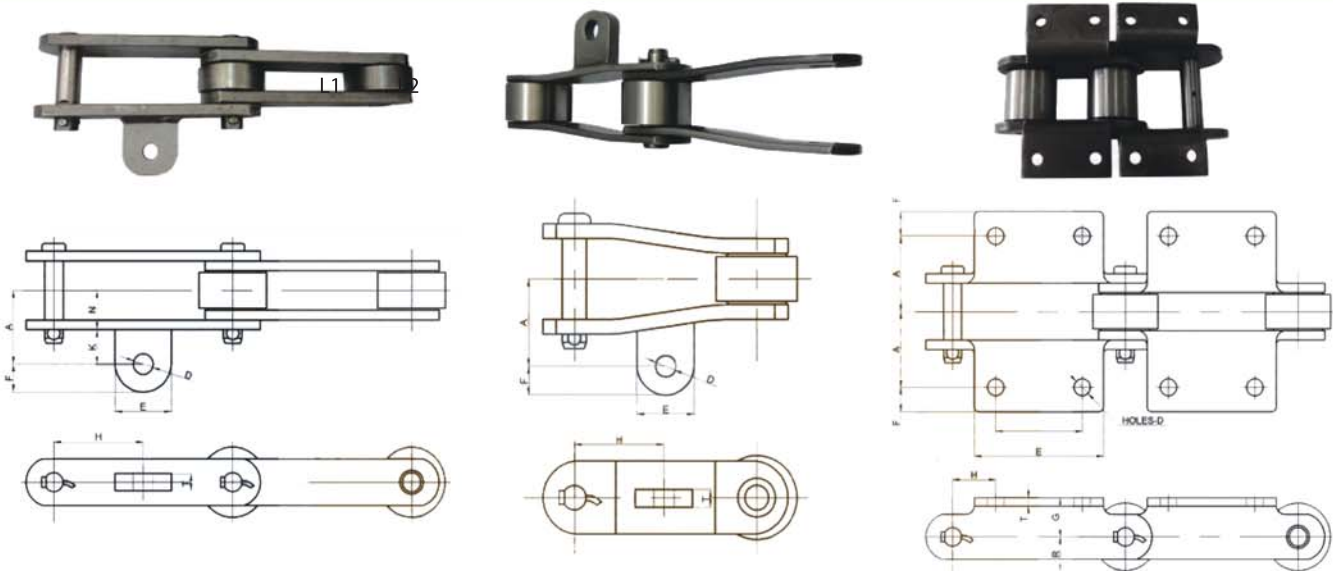
Notes: A: Straight Linkplate Type

B: Offset Linkplate Type

Roller dia: Other dia. Available on request

Chain for Sugar Industry

Standard Attachments



A42 Attachment(A)

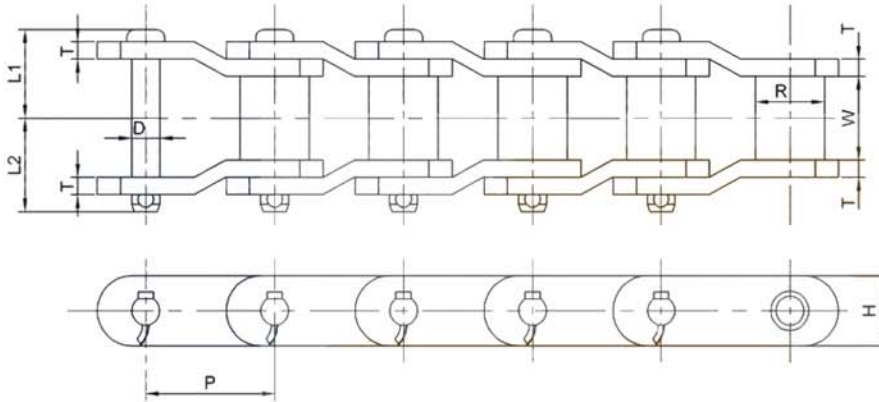
A42 Attachment(B)

K2 Attachment

Attachment No.	RPM Chain No.	Dimensions(mm)										Mass	
		A	B	E	F	G	H	K	M	N	T	kg/m	kg/pc
A42(B)	SS1113	60.30	16.80	49.50	20.00		50.30				13.50		0.22
	SS1124	50.80	11.00	35.00	17.50		50.80			10.30		0.10	
	SS1125	54.00	16.70	42.00	18.30		50.80			12.70		0.15	
	SS1130	61.90	17.50	55.00	27.80		76.20			15.00		0.34	
	SS1796	63.50	20.00	44.00	20.00		76.20			15.50		0.18	
	SS2184	66.70	17.00	55.00	25.40		76.20			15.00		0.32	
	SS800	81.70	17.00	68.00	25.40		101.60			15.50		0.39	
	09063	70.00	17.00	50.00	25.00		76.20			14.30		0.29	
	HR22840	80.00	21.00	100.00	25.00		95.00			19.00		0.63	
A42(A)	SS1114	60.30	17.00	48.00	23.00		76.20	59.15		24.15	14.00		0.26
	SS1796	63.50	20.00	44.00	20.00		75.90	24.50		39.00	15.50		0.19
	09060	63.50	20.00	44.00	20.00		76.20	35.45		28.05	15.50		0.24
	09061	63.50	20.00	44.00	20.00		75.90	25.15		38.35	15.50		0.18
	09063	63.50	20.00	44.00	20.00		76.20	34.10		29.40	15.50		0.20
K2	SS1796	111.00	12.50	110.00	150.00	41.30			76.20			25.00	
	SS800	132.00	17.50	165.00	183.00	55.50			114.50			45.50	
	SS960	111.40	14.30	111.00	152.60	41.30			76.20			27.20	
	SS996	111.10	14.50	136.00	174.00	41.30			76.20			24.90	
	09060	111.10	14.50	114.00	175.00	41.30			76.20			23.80	
	09061	111.10	14.50	113.00	176.00	41.30			76.20			25.60	
	09063	111.10	12.70	114.00	170.00	44.50			76.20			28.70	

Chain for Sugar Industry

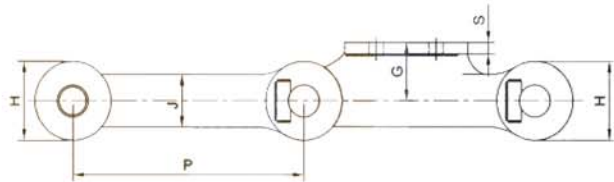
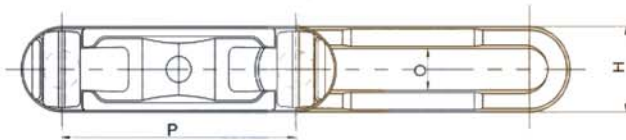
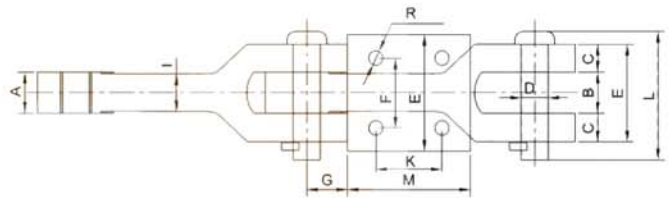
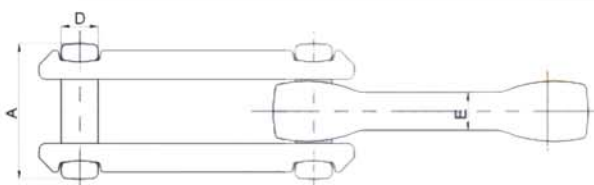
● Heavy Duty Drive Chains



RPM Chain No.	Dimensions(mm)								Average Ultimate Strength		Mass
	Pitch	Roller		Pin		Plate					
		W	Dia.	Dia.	Length	Height	Thickness	(kN)	(kgf)		
	P	W	R	D	L1	L2	H	T	(kg/m)		
H2570H	63.50	38.10	31.75	15.88	44.80	50.30	41.30	9.50	363	37000	13.70
H3011	77.90	39.70	41.28	19.05	45.60	54.30	57.20	9.50	490	50000	18.30
HP3H	78.11	38.10	31.75	15.88	44.80	50.30	41.30	9.50	363	37000	13.00
H3125	79.38	41.30	41.28	20.32	46.40	55.10	57.20	9.50	510	52000	18.80
H238	88.90	38.10	44.45	22.20	51.30	59.80	57.20	12.70	623	63500	23.90
H1242	103.20	49.20	44.45	22.23	56.80	65.40	57.20	12.70	623	63500	23.90
HP4H	103.20	49.00	44.45	23.23	63.30	73.70	58.70	16.00	755	77000	30.00
H1245	103.45	49.20	45.24	23.83	60.00	69.00	60.30	14.30	755	77000	27.40
H635	114.30	52.40	57.15	27.80	61.60	73.40	76.20	14.30	981	100000	37.80
H1602A	127.00	69.80	63.50	31.75	73.50	84.70	88.90	15.90	1373	140000	47.30
H6042	152.40	76.30	76.20	38.10	85.80	93.80	101.60	19.00	1863	190000	70.00
H10199	101.60	58.70	57.15	28.63	64.60	74.40	76.20	12.70	978	99700	37.20
H10398	103.89	49.20	47.63	25.40	62.50	69.50	76.20	14.30	961	98000	31.90
H127170	127.00	69.90	63.50	34.93	83.50	90.60	91.00	19.00	1765	180000	60.00

Chain for Sugar Industry

Drop Forged Rivetless Chain

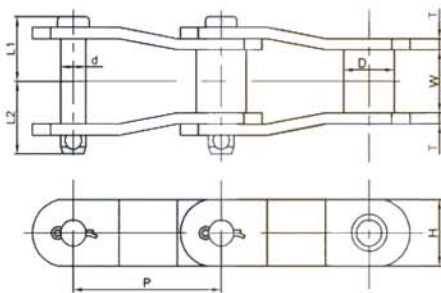
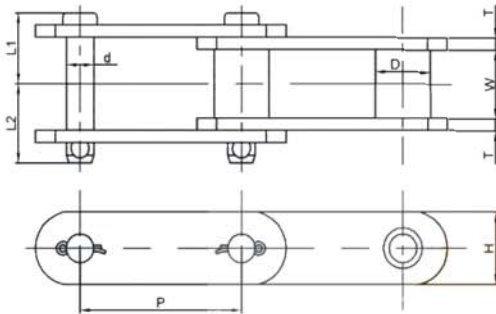


RPM Chain No.	Average Pitch P	Ave. T/S (kN)		Dimensions(mm)				Average Mass (kg/m)
		Heat Treated	Overall Width A	Pin Dia. D	Width of Inner Link E	Height H	Length of Opening O	
X348	76.20	110	46.00	12.70	12.70	27.00	13.50	3.20
X458	102.40	210	55.70	16.00	25.20	35.70	17.30	4.35
X678	153.20	320	77.00	22.00	31.80	50.80	25.40	3.03
678	153.20	320	77.00	22.00	20.60	50.80	25.40	3.00
698	153.20	515	95.30	28.60	25.40	68.30	31.80	18.10
998	229.40	515	95.25	28.00	25.40	67.50	32.00	14.80

RPM Chain No.	Average Pitch P (mm)	Average Ultimate Strength (kg)	Dimensions(mm)															Average Mass (kg/link)	
			A	B	C	D	E	F	G	H	I	J	K	L	M	S	R	Plain	Attachment
			P=304.8	304.80	88.000	50.80	54.00	36.50	44.50	127.00	82.60	76.20	101.60	38.10	63.50	108.00	145.00		

Chain for Sugar Industry

Bushed Chains



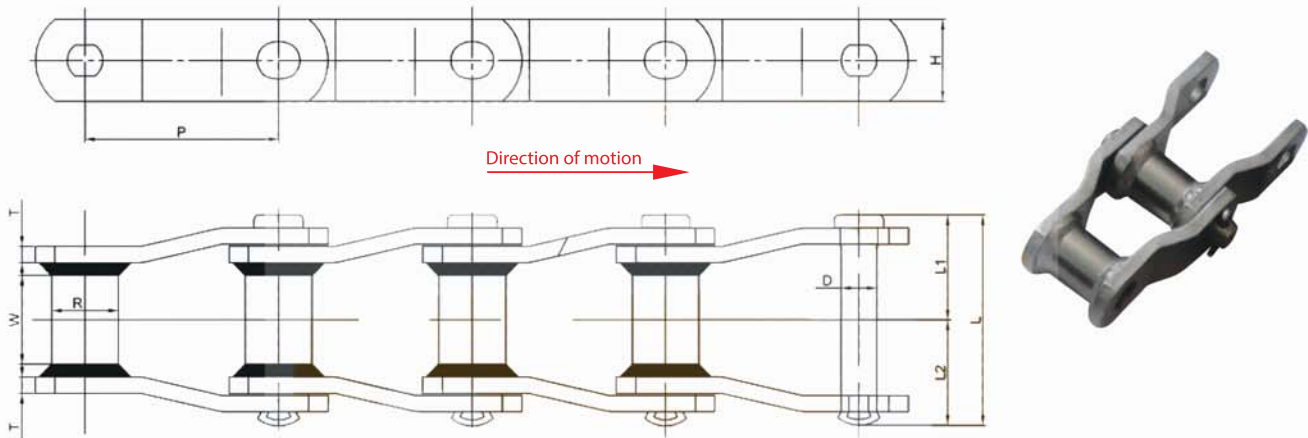
RPM Chain No.	Chain Type	Pitch P		Breaking Strength Min.(kg)	Bushing		Pin			Link Plate		Mass (kg/m)
		mm	m		D	W	d	L1	L2	T	H	
SS234	2	66.27	2 609	5 200	22.58	27.00	11.32	31.00	35.00	6.30	28.60	5.80
SS488	1	66.27	2 609	8 000	22.58	28.60	11.10	31.90	37.10	6.30	28.60	5.90
SS488	2	66.27	2 609	8 000	22.58	28.60	11.10	31.90	37.10	6.30	28.60	5.40
SS4103	1	78.11	3 075	14,500	31.80	31.80	19.05	39.00	45.50	7.90	44.50	12.20
SS0340	1	101.60	4.000	14,500	36.50	41.30	15.88	45.10	49.20	7.90	44.50	10.90
SSH124	1	101.60	4.000	14,500	36.50	54.00	19.05	52.30	57.20	7.90	44.50	21.50

(in.)

RPM Chain No.	Chain Type	Pitch P	Breaking Strength Min.(kg)	Bushing		Pin			Link Plate		Mass (kg/m)
				D	W	d	L1	L2	T	H	
SS234	2	2.609	11,500	57/64	1- 1/16	0.045	1- 7/32	1- 3/8	1/4	1- 1/8	5.80
SS488	1	2.609	17,500	57/64	1- 1/8	7/16	1- 1/4	1- 29/64	1/4	1- 1/8	5.90
SS488	2	2.609	17,500	57/64	1- 1/8	7/16	1- 1/4	1- 29/64	1/4	1- 1/8	5.40
SS4103	1	3.075	32,000	1- 1/4	1- 1/4	3/4	1- 17/32	1- 51/64	5/16	1- 3/4	12.20
SS0340	1	4.000	32,000	1- 7/16	1- 5/8	5/8	1- 25/32	1- 15/16	5/16	1- 3/4	10.90
SSH124	1	4.000	32,000	1- 7/16	2- 1/8	3/4	2- 1/16	2- 1/4	5/16	1- 3/4	21.50

Chain for Sugar Industry

Welded Chains

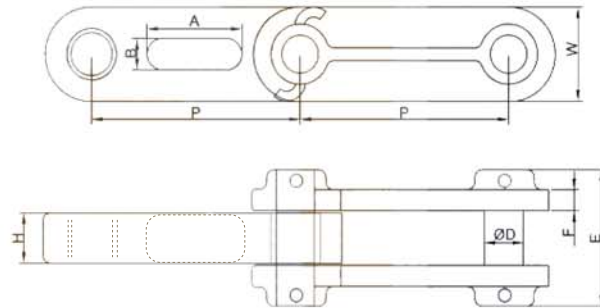
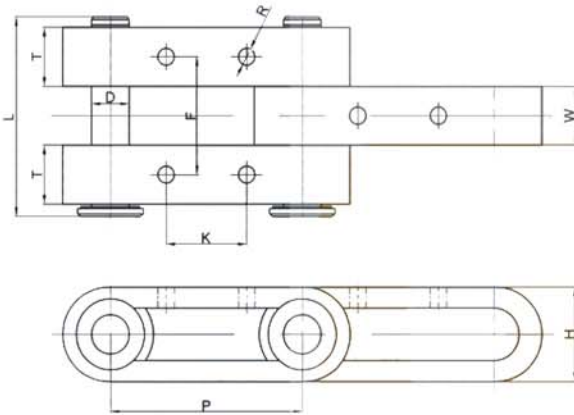


RPM Chain No.	Pitch P		Bush		Dia D (mm)	Pin			Link Plate		Average Ultimate Tensile Strength		Mass (kg/m)
	(mm)	(in)	Dia R (mm)	Width W (mm)		Length			Height H (mm)	Thickness T (mm)	(kN)	(kgf)	
						L (mm)	L1 (mm)	L2 (mm)					
WR78	66.27	2.609	22.20	28.40	12.70	79.70	38.00	41.70	28.60	6.30	106	10800	5.90
WH78											159	16200	
WR82	78.11	3.075	27.00	31.80	14.30	87.40	41.60	45.80	31.80	6.30	115	11700	7.20
WH82											177	18000	
WR124	101.60	4.000	36.60	41.30	19.05	109.00	51.30	57.70	38.10	9.50	203	20700	12.10
WH124											265	27000	
WR110	152.40	4.760	31.80	47.60	19.05	114.00	53.70	60.30	38.10	9.50	203	20700	12.60
WH110											265	27000	
WR111	120.90	4.760	36.60	57.20	19.05	124.90	59.20	65.70	38.10	9.50	203	20700	12.60
WH111											265	27000	
WR132	153.67	6.050	44.50	74.40	25.40	165.90	77.70	88.20	50.80	12.70	371	37800	19.70
WH132											441	45000	
WR150	153.67	6.050	44.50	74.40	25.40	165.90	77.70	88.20	63.50	12.70	441	45000	23.80
WH150											556	56700	

Notes: For the WR type, only pins are heat treated, while for the WH type, all components are heat treated.

Chain for Sugar Industry

● Link Chain



RPM Chain No.	Average Pitch P	Average Ultimate Strength	Dimensions(mm)								Average Mass (kg/m)
			Overall Width L	Pin Dia. D	Width of Inner Link W	Width of Outer Link T	Height H	Hole to Hole F	Hole to Hole K	Hole Dia R	
P=152.4	152.4	34000	152.4	30	45	45	60	93	64.0	13	24.4
P=152.4	153.2	63000	152.4	39	50	40	80	90	76.4	17	43.8
P=228.6	228.6	71400	154.2	39	50	40	80	90	95.0	17	36.5

RPM Chain No.	Dimensions(mm)								Tensile Strength kN	Weight KG
	P	D	E	F	H	W	A	B		
P250	250	58	181	25	60	110	111	60	1700	150

AUTHORIZED DISTRIBUTOR :



MOTION POWER AND SERVICES CO., LTD (RAYONG BRANCH)

TEL +66 38016999

🌐 www.motion.co.th ✉ sales9@motion.co.th
sales10@motion.co.th



MOTION POWER CO.,LTD (KORAT BRANCH)

TEL +66 44756092

🌐 www.motion.co.th ✉ sales3.mpk@motion.co.th
sales5.mpk@motion.co.th



RPM POWER TRANSMISSION CO., LTD

TEL +66 38212272

✉ sales@rpmpowertrans.com

